

Soft Washing vs. Pressure Washing vs. Drone Soft Washing



Intro.

Every good homeowner, business owner, roofer, and exterior cleaning company can come together on one fact:

Rain does not clean your house, roof, or building!

If you don't believe this, think about how often you wash your car. The same mold, pollen, bird droppings, and other outdoor grime on your car are all over your house or place of business.

But, here are the big questions that most people have:

What's The Difference Between Soft Washing And Pressure Washing?

What's The Best Way To Do Exterior Cleaning?

And What Does A Drone Company Have To Do With Exterior Cleaning?



Soft Washing vs. Pressure Washing

Soft washing and pressure washing are exactly how they sound.

Soft Washing

Uses low-pressure cleaning with soaps, solutions, and other disinfectants to clean housing structures.



Pressure Washing

uses high pressures in the neighborhood of 1,500-3,000 PSI to scour surfaces and remove grime.



The Best Way To Do Exterior Cleaning

The fundamental difference between these two comes down to the long-term effects of both types of cleaning.

Pressure washing quickly knocks away dirt, removes surface discoloration, and removes what the naked eye sees on exterior surfaces.

But, it doesn't get down to the root cause of what is causing those stains you may see every day.



The high pressure might end up doing more damage than good.



Think about it like this, when you have weeds in your garden, you can't just clip them; you need to pull them out by the root.

That's what soft washing is for exterior cleaning; by using soft pressure combined with a cleaning solution, you can get down to the root cause of the grime and dirt on a surface.

Soft Washing Pros

- **Effective.** It combines gentle water with cleaning solutions, so it is very effective and yields long-lasting results.
- **Gentle.** It is much better for delicate structures or surfaces that high-pressure washing can harm. Soft wash roof cleaning is a common option as high-pressure cleaning can be bad for roofs.
- **Easy to manage.** High-power pressure washers are difficult to operate and can be dangerous if handled incorrectly. It uses low-pressure power washing, making it easier to control and presenting less risk of injury.
- **Curbs harmful growth.** High-pressure power washing may force water into the siding and soffit of your roof. Trapped water may then breed mold and algae growth.

Soft Washing Cons

- **Slower.** Because you are using cleaning chemicals, it may take longer to perform than pressure washing.



Dangerous Business

There is a major con to both soft washing and pressure washing. To accurately perform exterior cleaning, 90% of jobs will require one of the following:

- ***A Ladder***
- ***Scaffolding***
- ***Lift***
- ***Repel system***

This makes exterior cleaning very dangerous and slows the cleaning time even more. Not to mention renting a lift becomes costly, making your ROI on those properties much smaller than expected.



Drone Soft Washing

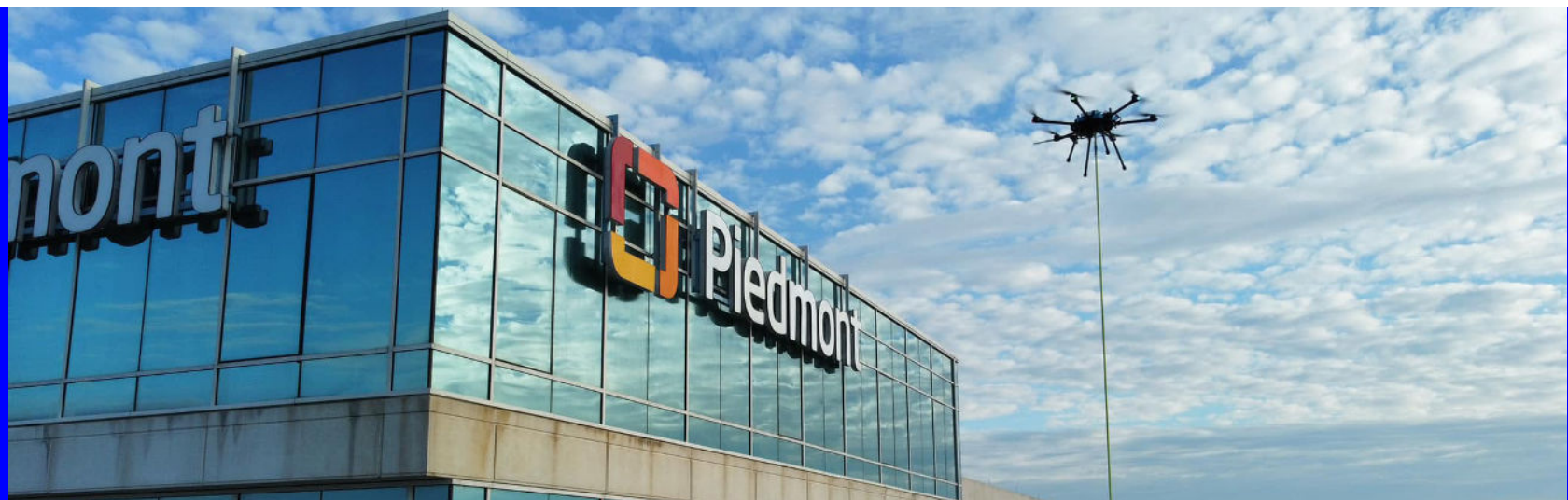
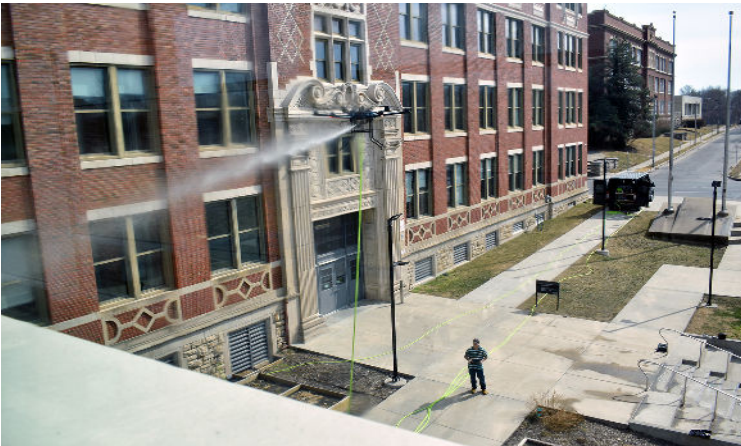
With **our** Lucid C1 Spraying drone, you can have the best in the exterior cleaning world. Our C1 drone sprays at 300psi, making it perfect for performing soft washing jobs at the optimal level.

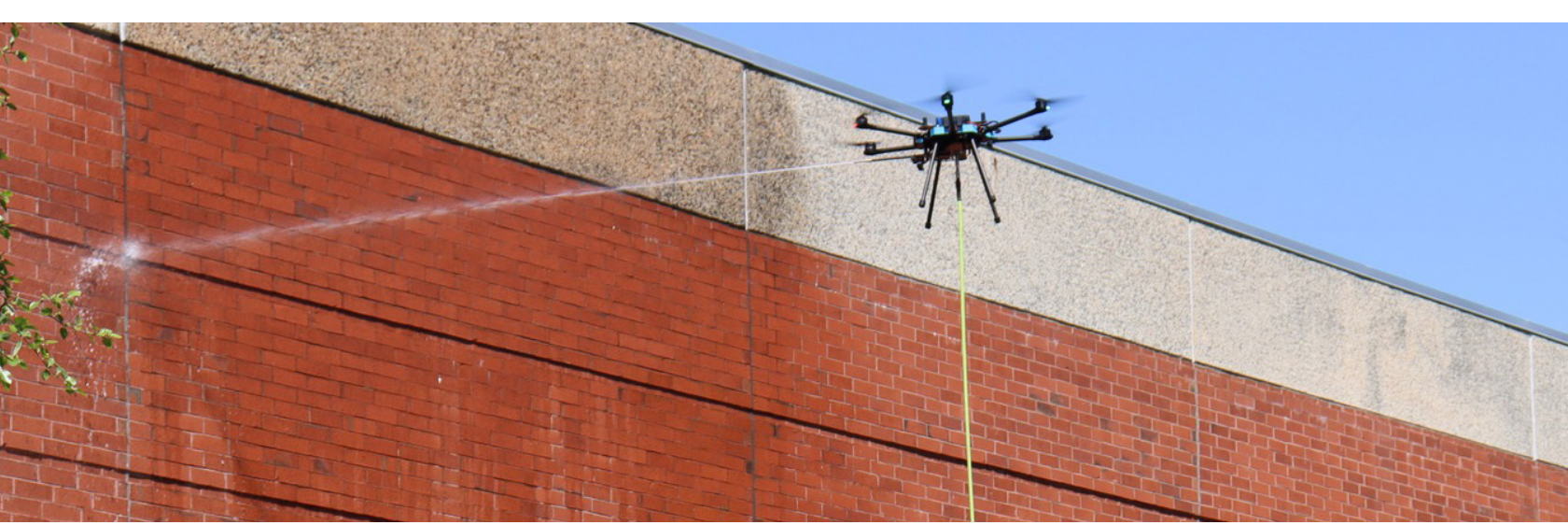
Eliminate any damage that could be caused by pressure washing and create a long-lasting clean!

The Lucid C1 drone also doesn't require a ladder, lift, or any other system that could be potentially dangerous!

Reducing Job Site Injuries By 95%!

And because you won't need to pay for lift rentals or spend extra time setting up systems to perform exterior cleaning jobs, you'll be able to complete more jobs in a shorter time frame, and make more money!





Ready To **Elevate Your Efficiency?**

Contact Wet Powerwash.

Greg Palumbo
wetsoftwash@gmail.com

401-495-4500